

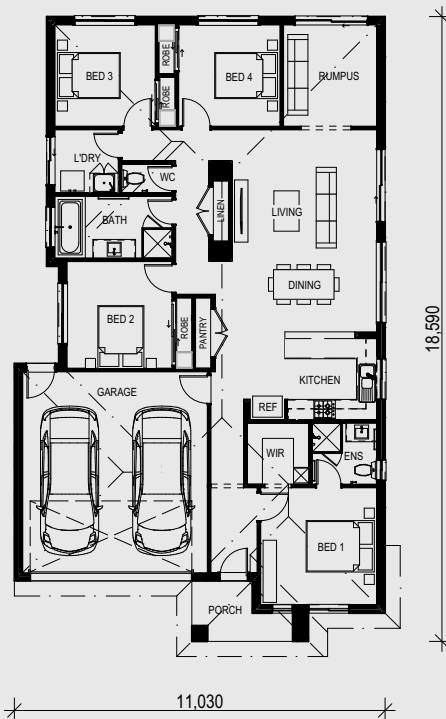
**Lot 1347 WYLIE STREET,
ARMSTRONG CREEK, VIC 3217**
Blackburn - Russell Facade

4  2  2 

Package Price \$ 729,400



ARTIST IMPRESSION



Turnkey inclusions

- Fixed price contract includes site costs
- Window furnishings throughout
- 2590mm ceiling heights
- 20mm stone benchtops to kitchen and all wet areas
- Professionally selected colour scheme
- Laminate timber flooring
- Stainless steel appliances
- LED downlights throughout
- Ducted gas heating throughout
- Air conditioner to living area and master bedroom
- Sectional garage door
- Front & rear landscaping
- Letterbox, clothesline, antenna
- Fencing as per estate covenants
- 6 Star energy rating

Land Size	313 m ²
Build Size	182.69 m ²
Land Price	\$ 351,500
Build Price	\$ 377,900
Total Price	\$ 729,400

SHAPE
homes

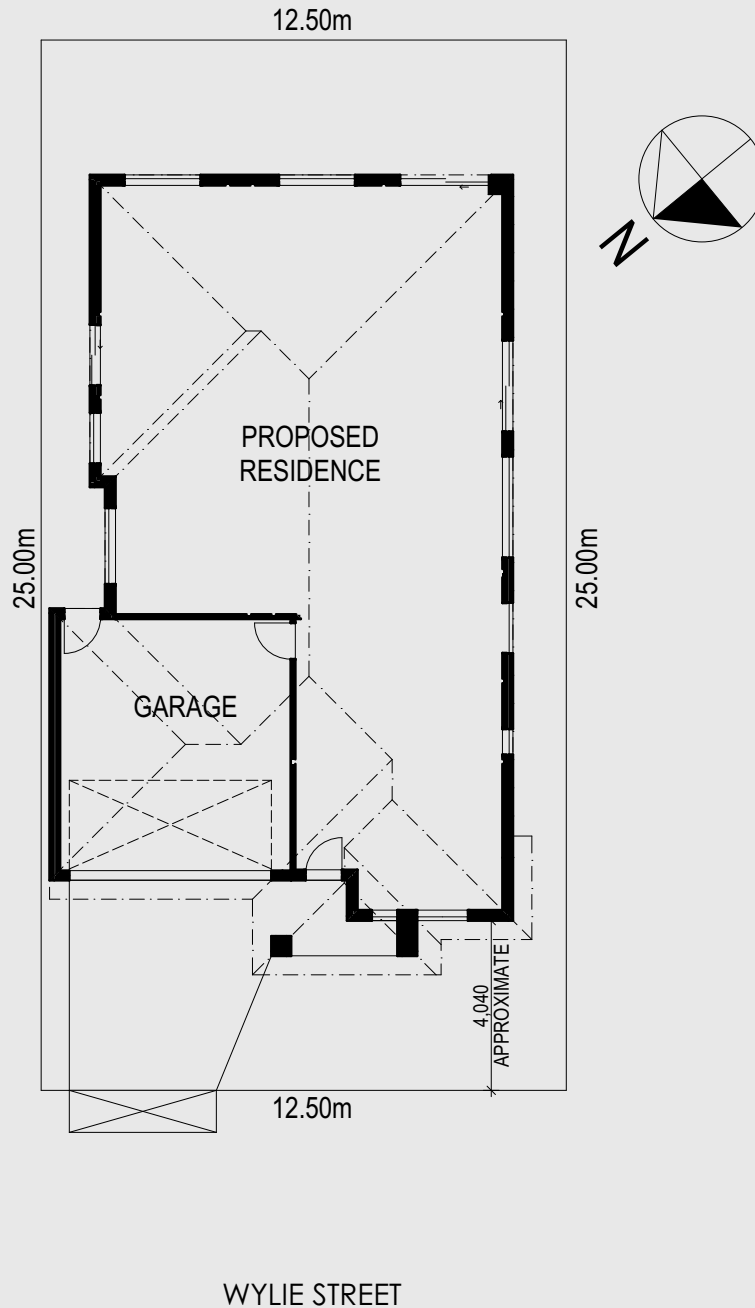
Lot 1347 WYLIE STREET, ARMSTRONG CREEK, VIC 3217

Blackburn - Russell Facade



Lot 1347 WYLIE STREET, ARMSTRONG CREEK, VIC 3217

Blackburn - Russell Facade



PROPOSED AREA	
HOUSE	140.94
GARAGE	37.11
PORCH	4.64
	<u>182.69 m²</u>

© The design and floor layout of this house is owned by shape homes. Under the copyright act 1968 this cannot be reproduced in any shape or form without prior written authorisation. Any doing so will be liable for action under the act. Plans shown are indicative only and may be subject to minor changes in the interest of product improvements or estate design guidelines. Note: price effective for 3 months from date of issue.