

# Lot 232 RUMBEE CRES., TARNEIT, VIC 3029

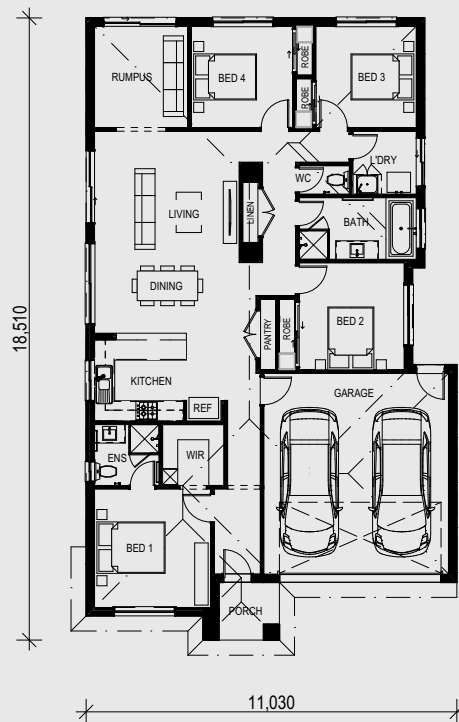
Blackburn - William Facade

4  2  2 

Package Price \$ 712,900\*



ARTIST IMPRESSION



## Turnkey inclusions

- Fixed price contract includes site costs
- Window furnishings throughout
- 2590mm ceiling heights
- 20mm stone benchtops to kitchen and all wet areas
- Professionally selected colour scheme
- Laminate timber flooring
- Stainless steel appliances
- LED downlights throughout
- Ducted gas heating throughout
- Air conditioner to living area and master bedroom
- Sectional garage door
- Front & rear landscaping
- Letterbox, clothesline, antenna
- Fencing as per estate covenants
- 6 Star energy rating

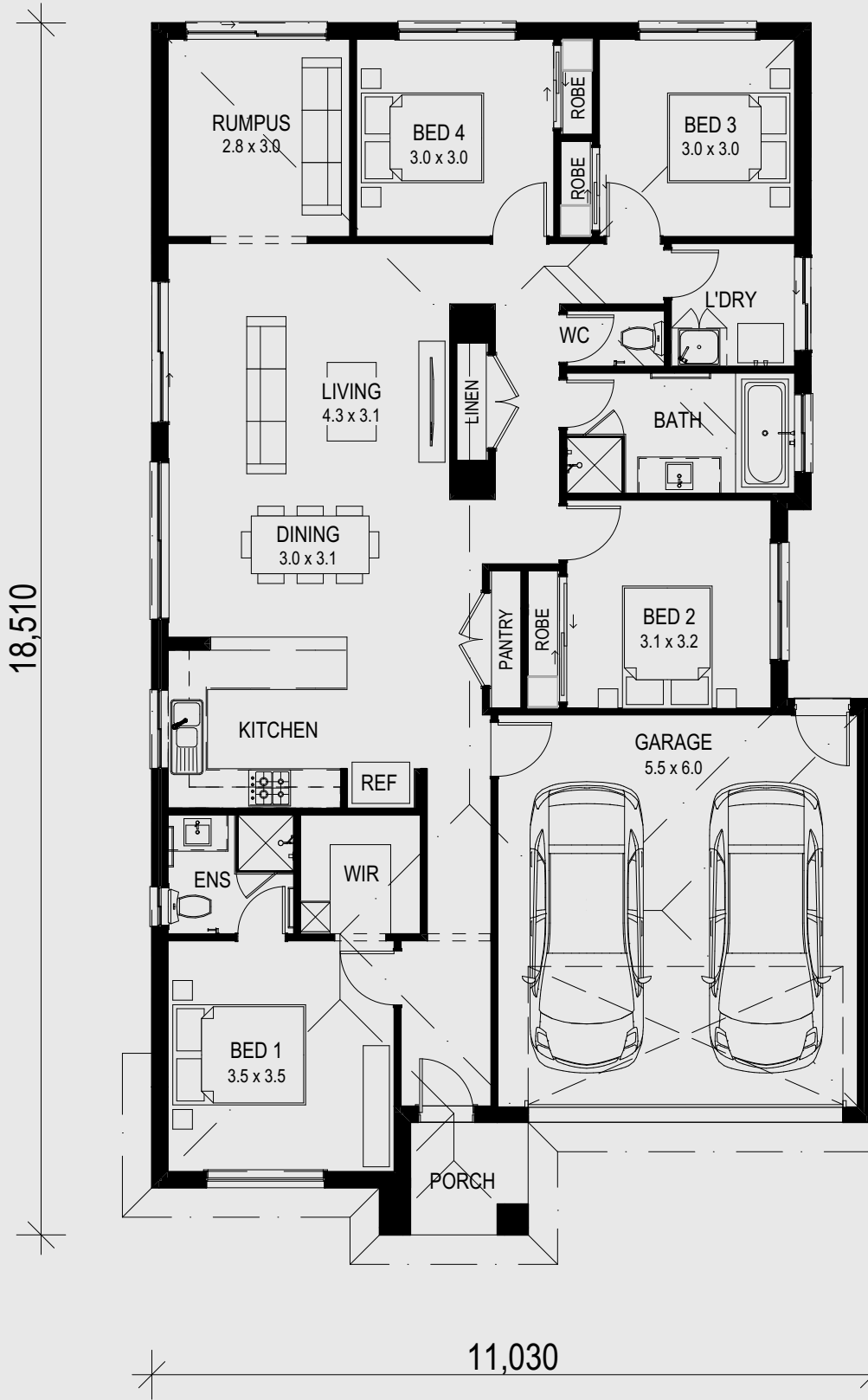
Land Size	312 m <sup>2</sup>
Build Size	181.64 m <sup>2</sup>
Land Price	\$ 351,000
Build Price	\$ 361,900
Total Price	\$ 712,900*

**SHAPE**  
homes

\*Pricing valid for 90 days as of 29/1/2024

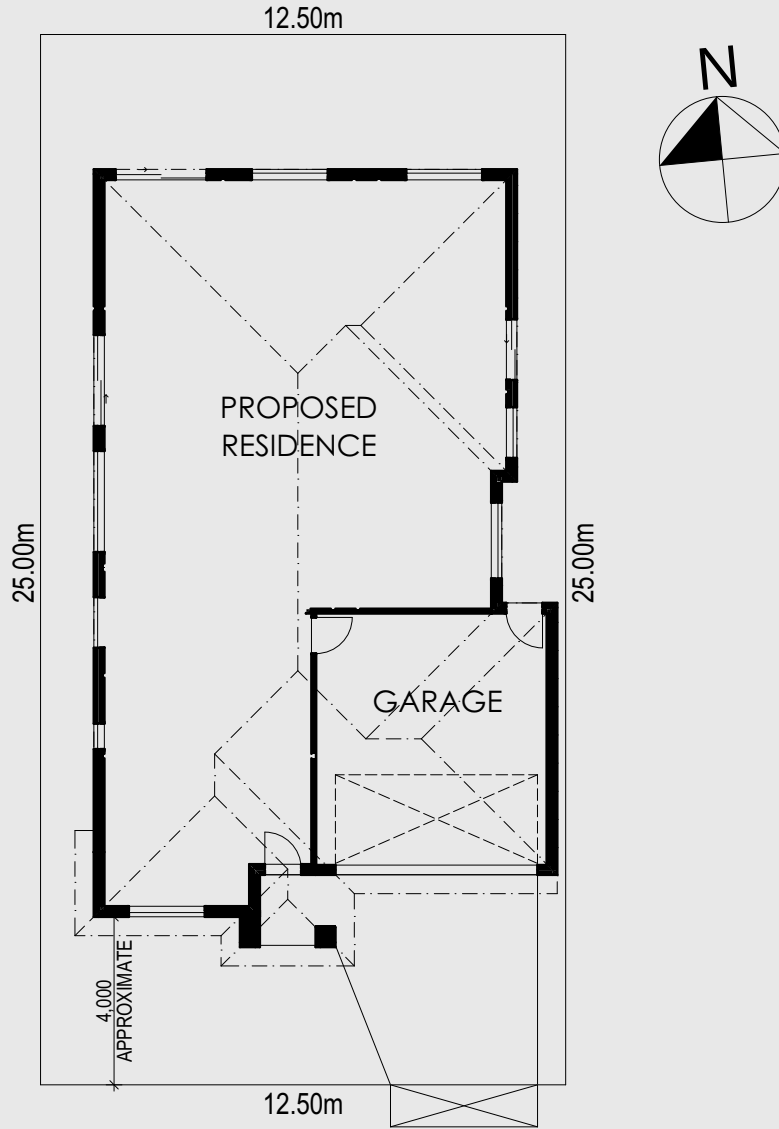
# Lot 232 RUMBEE CRES., TARNEIT, VIC 3029

Blackburn - William Facade



# Lot 232 RUMBEE CRES., TARNEIT, VIC 3029

Blackburn - William Facade



RUMBEE CRES.

PROPOSED AREA	
HOUSE	141.10
GARAGE	37.11
PORCH	3.43
	<u>181.64 m<sup>2</sup></u>

© The design and floor layout of this house is owned by shape homes. Under the copyright act 1968 this cannot be reproduced in any shape or form without prior written authorisation. Any doing so will be liable for action under the act. Plans shown are indicative only and may be subject to minor changes in the interest of product improvements or estate design guidelines. Note: price effective for 60 days from date of issue.